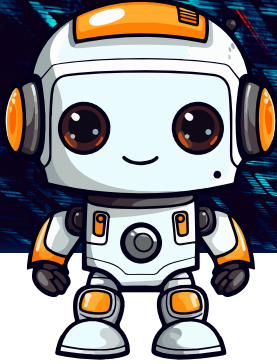
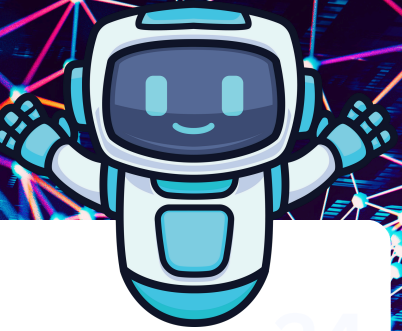


ARTIFICIAL INTELLIGENCE



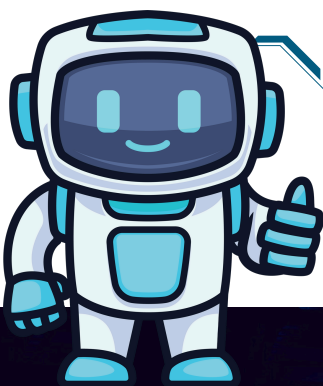
WORD SEARCH



INSTRUCTIONS

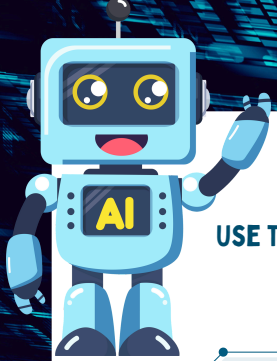
FIND 9 EXPRESSIONS RELATED TO ARTIFICIAL INTELLIGENCE.
THE EXPRESSIONS WILL APPEAR EITHER VERTICALLY OR HORIZONTALLY WITHIN THE WORD SEARCH PUZZLE.

C	W	R	T	I	O	P	S	V	A	R	B	N	O	E
J	L	R	C	E	P	T	P	Y	U	I	S	B	F	H
M	A	C	H	I	N	E	L	E	A	R	N	I	N	G
U	K	Z	A	S	E	Y	F	C	O	X	E	G	O	E
R	A	U	T	G	U	L	M	K	W	L	N	D	D	K
O	V	L	B	C	R	O	U	N	I	B	U	A	P	C
B	R	F	O	I	A	V	T	N	L	P	G	T	C	T
O	H	O	T	H	L	P	R	D	L	V	Y	A	K	P
T	B	K	T	D	N	J	O	J	D	E	S	O	F	J
I	N	P	D	E	E	P	L	E	A	R	N	I	N	G
C	O	I	R	X	T	A	L	N	L	S	Z	A	B	T
S	I	T	F	A	W	M	U	T	P	S	T	H	I	I
Y	V	L	H	E	O	I	C	B	P	J	K	I	O	O
P	A	L	G	O	R	I	T	H	M	D	R	L	T	T
J	O	I	L	I	K	F	R	C	Y	S	U	A	G	K



NEED HELP?

USE THE DEFINITIONS ON THE FOLLOWING PAGE TO HELP YOU.
THERE ARE 2 EXPRESSIONS WHICH ARE ACRONYMS.



CLUES

USE THESE DEFINITIONS TO HELP YOU FIND THE EXPRESSIONS IN THE WORD SEARCH. REMEMBER THAT THERE ARE 2 EXPRESSIONS WHICH ARE ACRONYMS.

1

THE ABILITY OF COMPUTERS TO UNDERSTAND AND PRODUCE LANGUAGE ALMOST IN THE SAME WAY THAT HUMANS CAN.
(ACRONYM)

2

A COMPUTING SYSTEM INSPIRED BY THE STRUCTURE OF THE HUMAN BRAIN USED TO TEACH MACHINES TO RECOGNISE PATTERNS AND MAKE PREDICTIONS.

3

A SET OF COMMANDS THAT A COMPUTER FOLLOWS TO SOLVE A SPECIFIC PROBLEM OR TASK.

4

A BRANCH OF ENGINEERING THAT DEALS WITH THE DEVELOPMENT AND USE OF ROBOTS TO PERFORM HUMAN TASKS.

5

DEVICES, VEHICLES, BUILDINGS, AND OTHER PHYSICAL OBJECTS EQUIPPED WITH SENSORS, SOFTWARE, AND CONNECTIVITY TO EXCHANGE DATA. (ACRONYM)

6

A SUBSET OF MACHINE LEARNING CONSISTING OF NEURAL NETWORKS WITH MULTIPLE LAYERS.

7

A SOFTWARE APPLICATION DESIGNED TO HOLD A CONVERSATION WITH HUMAN USERS.

8

THE ABILITY OF A COMPUTER SYSTEM TO LEARN AND IMPROVE FROM EXPERIENCE.

9

DATA SETS THAT ARE TOO LARGE OR COMPLEX FOR TRADITIONAL DATABASES.

